

Synergy ANALYZE helps organizations understand collaboration trends and patterns, and provides the analysis needed to make fact-based decisions on collaboration investments, divestments, training, and service changes

### Ease of Use

Quickly create and distribute data

### Flexible Reports

Enable key players to talk analytics

### For Who

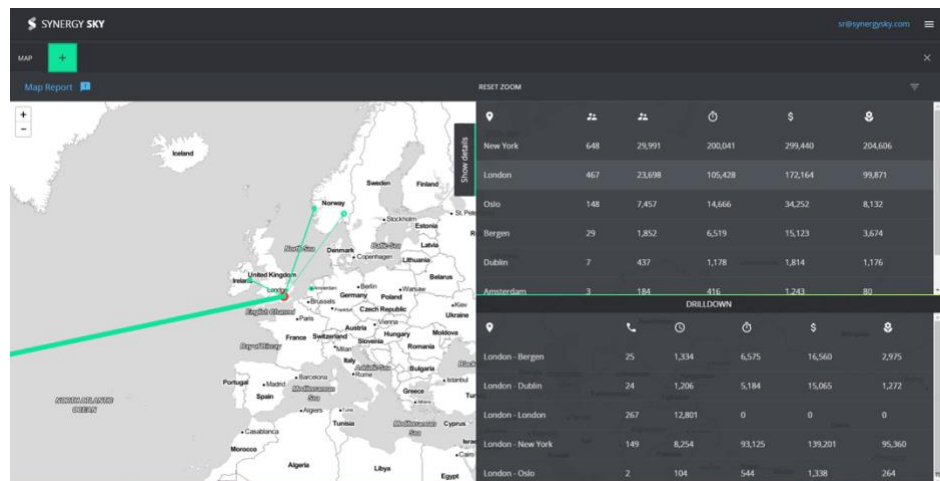
Organizations with multiple collaboration vendors

### Supported Technologies

Cisco VCS / CMS, Pexip



- ✓ Multi-dimensional collaboration analytics
- ✓ All data stays on customer premises
- ✓ Hybrid cloud
- ✓ Easy deployment



Tag systems and users with geo location and get:

- ✓ Travel Cost Saving
- ✓ CO2 Savings
- ✓ Heat Maps
- ✓ Productivity Increase
- ✓ Work Life Balance

Book Demo  
<http://www.synergysky.com/>

## Synergy ANALYZE Specifications

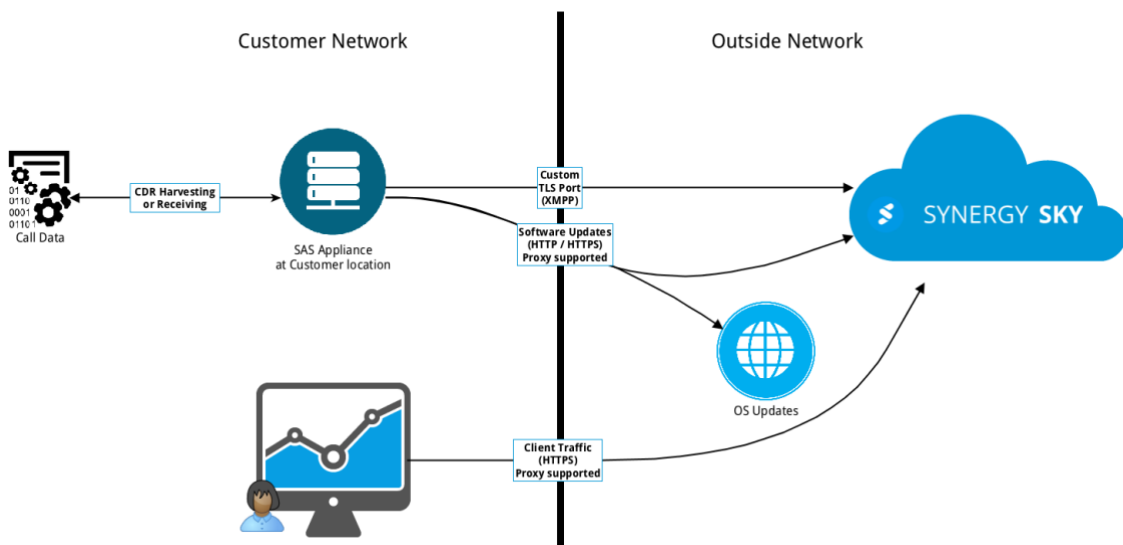
- ✓ Live dashboard
- ✓ Intelligent matching of data from different devices to avoid duplicate reporting of the same calls
- ✓ Fully customizable URI tagging system with Department, Location, Country and Custom Tags
- ✓ User and Admin roles
- ✓ All data communication using TLS
- ✓ XMPP driven for scalable architecture
- ✓ Unique on-premises solution, keeping your data on your premises
- ✓ Quick installation.
- ✓ Locale and Time zone configuration support for formatting and calculation
- ✓ Automatic one-click upgrade with scheduling support
- ✓ Batch management of URIs to be able to swiftly tag multiple URIs

## Specifications

From	To	Protocol (Port)	Description
SA Appliance	92.220.31.18/28	SSH (2222)	Remote support, disabled as default.
SA Appliance	92.220.31.18/28	XMPP-TLS (10000-40000)	XMPP using TLS, a single port is assigned on a per-customer basis to keep traffic-flow separate
		DNS	
SA Appliance	*	NTP	Default target is: 0.freebsd.pool.ntp.org, 1.freebsd.pool.ntp.org
SA Appliance	2.freebsd.pool.ntp.org		
SA Appliance	pkg.FreeBSD.org	HTTP/HTTPS	Software update repository, web proxy is supported
SA Appliance	92.220.31.18/28	HTTP/HTTPS	Software update repository, web proxy is supported
SA Appliance	Cisco Video Communication Server API	HTTP/HTTPS	CDR harvest of Cisco VCS
SA Appliance	Cisco Meeting Server API	HTTPS	System configuration of CDR Receiver using Management API
Cisco Meeting Server Node	SAS Appliance	HTTP/HTTPS	CDR pushed from Cisco CMS to the Synergy SKY SAS
SAS Appliance	Pexip Infinity API	HTTP/HTTPS	System configuration of CDR Receiver using Management API
All Pexip Infinity Nodes	SAS Appliance	SYSLOG (TCP)	CDR syslog pushed from Pexip Infinity to the Synergy SKY SAS.
Web client	92.220.31.18/28	HTTPS	User interface access is through the cloud over HTTPS, proxy is supported.

## Device version support

Device	Version
Cisco Video Communication Server	X7.x →
Cisco Meeting Server	2.x →
Pexip Infinity	6.x →



For More Information [www.synergysky.com](http://www.synergysky.com), [contact@synergysky.com](mailto:contact@synergysky.com)