



Synergy SKY Analytic Server

Synergy SKY Analytics Server (SAS) helps organizations understand collaboration trends and patterns, and provides the analysis needed to make fact-based decisions on collaboration investments, divestments, training, and service changes

Ease of Use

Quickly create and distribute data

Flexible Reports

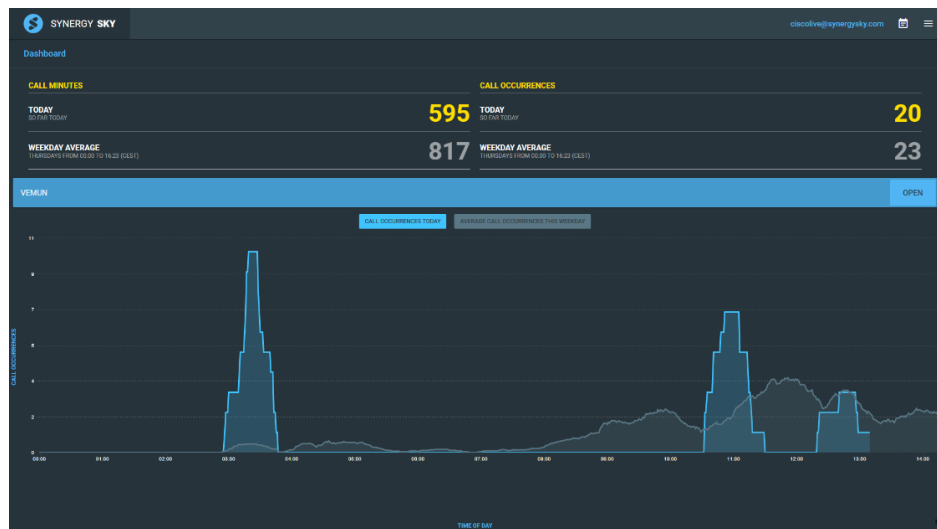
Enable key players to talk analytics

For Who

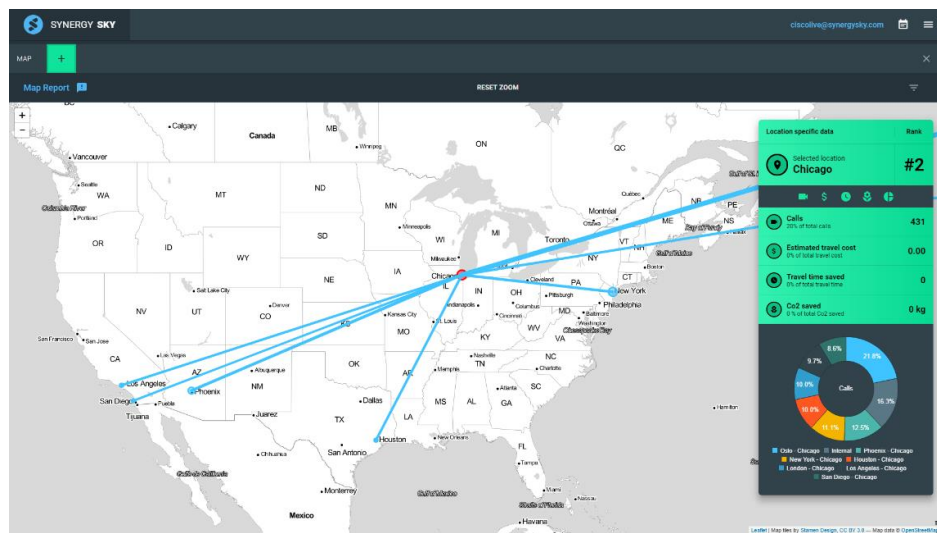
Organizations with multiple collaboration vendors

Supported Technologies

Cisco VCS / CMS
Pexip, Skype for Business



- ✓ Multi-dimensional collaboration analytics
- ✓ All data stays on customer premises
- ✓ Hybrid cloud
- ✓ Easy deployment



Tag systems and users with geo location and get:

- ✓ Travel Cost Saving
- ✓ CO2 Savings
- ✓ Heat Maps
- ✓ Productivity Increase
- ✓ Work Life Balance

Book SAS Demo
<http://www.synergysky.com/>

Synergy SKY Analytics Server Specifications

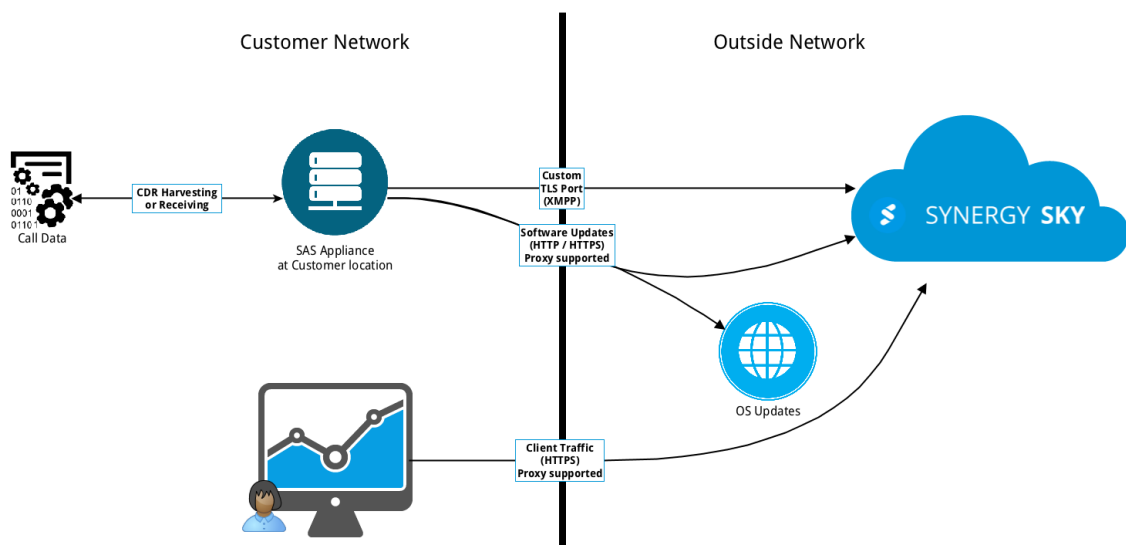
- ✓ Live dashboard
- ✓ Intelligent matching of data from different devices to avoid duplicate reporting of the same calls
- ✓ Fully customizable URI tagging system with Department, Location, Country and Custom Tags
- ✓ User and Admin roles
- ✓ All data communication using TLS
- ✓ XMPP driven for scalable architecture
- ✓ Unique on-premises solution, keeping your data on your premises
- ✓ Quick installation.
- ✓ Locale and Time zone configuration support for formatting and calculation
- ✓ Automatic one-click upgrade with scheduling support
- ✓ Batch management of URIs to be able to swiftly tag multiple URIs

Specifications

From	To	Protocol (Port)	Description
SAS Appliance	92.220.31.18/28	SSH (2222)	Remote support, disabled as default.
SAS Appliance	92.220.31.18/28	XMPP-TLS (10000-40000)	XMPP using TLS, a single port is assigned on a per-customer basis to keep traffic-flow separate
SAS Appliance	*	DNS	
SAS Appliance	*	NTP	Default target is: 0.freebsd.pool.ntp.org, 1.freebsd.pool.ntp.org 2.freebsd.pool.ntp.org
SAS Appliance	pkg.FreeBSD.org	HTTP/HTTPS	Software update repository, web proxy is supported
SAS Appliance	92.220.31.18/28	HTTP/HTTPS	Software update repository, web proxy is supported
SAS Appliance	Cisco Video Communication Server API	HTTP/HTTPS	CDR harvest of Cisco VCS
SAS Appliance	Cisco Meeting Server API	HTTPS	System configuration of CDR Receiver using Management API
Cisco Meeting Server Node	SAS Appliance	HTTP/HTTPS	CDR pushed from Cisco CMS to the Synergy SKY SAS
SAS Appliance	Pexip Infinity API	HTTP/HTTPS	System configuration of CDR Receiver using Management API
All Pexip Infinity Nodes	SAS Appliance	SYSLOG (TCP)	CDR syslog pushed from Pexip Infinity to the Synergy SKY SAS.
Web client	92.220.31.18/28	HTTPS	User interface access is through the cloud over HTTPS, proxy is supported.

Device version support

Device	Version
Cisco Video Communication Server	X7.x →
Cisco Meeting Server	2.x →
Pexip Infinity	6.x →



For More Information www.synergysky.com, contact@synergysky.com